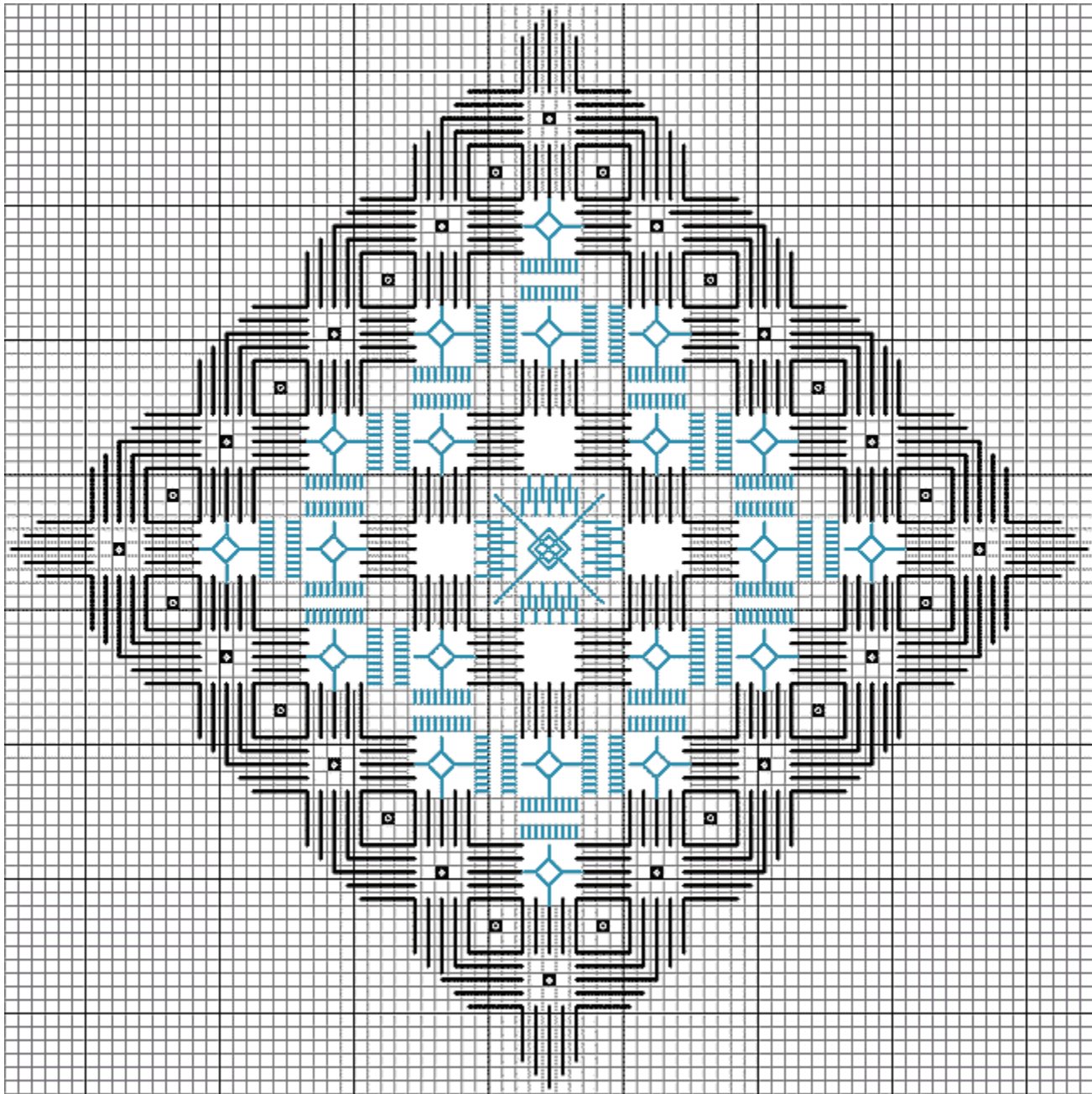


# Crystal Waters Hardanger Ornament

The Hardanger Pincushion ornament is derived from the Hardanger Mountain Band in Crystal Waters Sampler...see this and other samplers designed by Thea Dueck on the Victoria Sampler Home Page!



Design Area: 38h x 38w  
28ct White Quaker Cloth: 2 1/2" high x 2 1/2" wide. (Cut 5" X 5")  
DMC White #12 Perle Cotton  
DMC White #8 Perle Cotton  
◆ 2mm pearl beads - S.J. designs - white  
○ Mill Hill Frosted Beads 60168 - blue

© Copyright 1998 The Victoria Sampler. All rights reserved

# Instructions

With DMC White Perle Cotton #8, work all satin stitch kloster blocks as shown on graph. Note: outside rows of kloster blocks are modified! Use DMC #12 White Perle Cotton for all weaving. Complete all cutting, weaving and filling each section before moving to the next section.

1. Start by cutting only the center section. Then work woven bars and finally one Spider Web in the center. Remember that three sides of the center open square should be woven before you begin the spider web. Make sure you wrap the spider web over the top diagonal thread and under the bottom diagonal thread.
2. Then cut and work the Dove's Eyes and divided bars. Work all horizontal bars first, then continue with vertical bars, adding dove's eyes where possible.
3. Finally attach the Mill Hill large blue Frosted Beads #60168 and SJ Designs 2mm white pearl beads alternately as shown on main chart. (The blue beads are to be placed at the points of the diamond)
4. Back with blue lining fabric and fashion into an ornament or pincushion, or top a smaller blue jar for your powder room.

Hardanger, pulled and drawn thread work are all enjoying a revival. There are many different books in your needlework store to guide you through the basic steps. Janice Love's "Hardanger, Basics and Beyond" will give you full instructions for Filling stitches. You can find this book, or other materials in this pattern at your local needlework shop or mail order source.

---

© Copyright 1998 The Victoria Sampler. All rights reserved  
Designed by Thea Dueck for The Victoria Sampler  
8700 Aldous Terrace, Sidney B.C. V8L 1L2 Canada  
(250) 656-3566 FAX: (250) 656-0447  
email: [Thea@victoriasampler.com](mailto:Thea@victoriasampler.com)  
<http://www.victoriasampler.com>

---

**Have you seen our Online  
Needlework Cyberclasses!?**